



Piedmont Pastel Society

Quarterly Newsletter - April-June, 2022
Website - www.piedmontpastelsociety.org

President - Laurie Basham

Vice President - Cammie Stadler

Secretary - Deb Ashton

Treasurer - Jay DeChesere

Workshops - Shirley Buckler

Zoom Coordinator - Kim Long

Statewide Exhibit Chair - Judy Wilson

**Signature Membership Program
- Ginny Stocker**

Programs - Cammie Stadler

Facebook - Patricia Wilt

**Board Member at Large -
Carmen Davidson**

Newsletter - Joan Dreicer

President's Letter

Happy Spring Everyone!

Boy it seemed like a long winter!. So glad to see the flowers and trees popping, Such a fun season to paint, whether it's plein air or photos of the flowers blooming in your yard.

I am writing this as we finish up our first HYBRID workshop with the energetic and masterful Tara Will. What a fabulous experience. She painted 7+ demos over three days and shared the philosophy and principles she uses in her dynamic work. She is truly amazing in her confident mark making and color choices. My favorite part of her process is when, as she says, she "turns on the lights." Every demo was so exciting to watch unfold. We had 10 participants, 8 of them PPS members, who joined Tara at the AFAS Unleashed Arts Center in Winston-Salem. It was a great space in the heart of the arts district and we had a great time connecting after such a long hiatus. We also had 4 members join us virtually, thanks to the one and only Laura Pollak, who jumped to help as soon as I told her we needed to open it up via Zoom to be able to run the workshop.

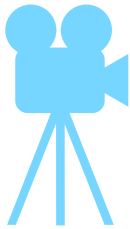
She'd been so disappointed she couldn't be at the live workshop and was so happy to be able to join in the fun. With her expertise on Zoom and Padlet, not only were we able to have members from afar join us, but the live participants have the same benefits of the recorded Zoom as well as the fabulous online bulletin board, Padlet. It was a great way to see everyone's work all at once and even see our progress.



Piedmont Pastel Society

President's Letter continued

I received great feedback with this hybrid model and I am hoping we will be able to do this again in the future.

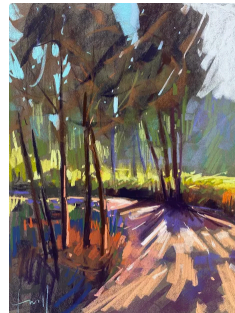
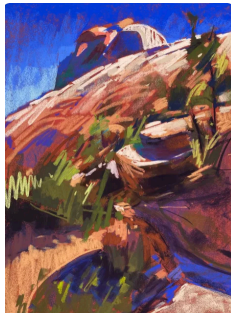
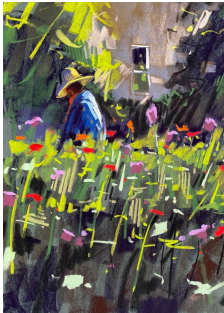


Check out this fun video or our weekend!

<https://www.youtube.com/watch?v=NNgcLganbIU>



Tara Will Workshop Photos



The Statewide isn't far off and hopefully we will have a lot of representation from PPS.

April 14th is the deadline for art submissions for the online show,

On Common Ground: From the Mountains to the Sea,

to be shown from May 16, 2022 to June 30, 2022

<https://www.showsubmit.com>

The workshop with Michael Chelsey Johnson on May 9-11 will be on ZOOM and the in-person plein air workshop will be May 30-June 1 in the Asheville Black Mountain area. Sign up ends on May 1st, so HURRY!

http://www.appalachianpastelsociety.org/wp-content/uploads/2022/02/MCJ_WorkshopDoc_FINAL_2_2_22.pdf



President's Letter continued

Our Signature Status guideline and submission form will be uploaded on our website soon, so be on the lookout for that. When applying, keep in mind you can apply only after serving 2 years or more on the board of any IAPS affiliated society within the past 5 years. Anyone who has served 2 years or more on the PPS board or committees will be eligible with no restrictions regarding the time of service. All points accrued before serving on our PPS board will be accepted. For full details go to our website or click on this link: [PPS Signature Status](#)

We would LOVE to have you join us on the board at any time!

I would like to welcome Joan Dreicer as our new Newsletter Designer! Joan is a member of PPS but also serves as President of the Mid-Atlantic Pastel Society. THANK YOU Joan for helping us out and can't wait to see our new Newsletter.

Don't forget about our Facebook Raffle! More information on Page 13.

We are also hoping to plan some in-person plein air events in the Triad area. If you know of a place and would like to help coordinate please contact us. It would be great to get one in this spring and again in the fall!
Hope you enjoy the warmer weather and find some time to paint!

Laurie

Calendar of Upcoming Events

2022 NC Statewide Pastel Exhibition

On Common Ground: From the Mountains to the Sea

May 16, 2022 to June 30, 2022

Juror— Michael Chesley Johnson, AIS, PSA, MPAC

Entry Deadline Midnight, April 14

Michael Chelsey Workshop - May 9-11 via Zoom

Workshop - May 30-June 1 - IN PERSON!

Registration Deadline - May 1

Demo with Karen Israel - April, 16, 2022 10am

Demo with Greg Barnes - May 21, 2022 10am

Demo with Laurie Basham - June , 2022



Workshops and Demos

Colette Ody Smith talks about her February Demo

Piedmont Pastel Society's February Zoom Demo was presented by Colette Ody Smith.



Included here is the finished painting I began for the presentation/demo. I have titled it "Upended".

It turned out to be quite a challenge – one that required re-painting the entire center and mid-top area more than once. At a certain point I was ready to sadly say it was totally failed, but I'm glad I gave it one more try. The drawing of the upper branches was very clumsy and the reflections in the center area were way too congested and confusing. I was not able to totally resolve my issues with how to treat the top area (either more realistically by including the actual trees in the distance, or just referring to them with vertical marks). I ended up going much more poetically entirely. While the struggles would not have made entertaining watching, I believe that my choosing a riskier image, one that I knew I would have to manipulate quite a bit, could be educational. It does show how far from the photograph the painting wanted to go. Psychologically it's not at all about the photo any more. It's more as if the photo merely gave me the materials to work with.

I was happy with the leaf cover in the lower area and only needed to knock it back a bit from its specificity to fit the rest of the image style. The small touches of various colors from top to bottom are important to unify the image, as are the gestural marks that enliven the top area.

The biggest change I made was to assert the middle area of pale ultramarine violet across the entire width of the painting. I felt it needed that swath of horizontality to counter the original compositional weakness of the tree forms pointing up in the center. I worked hard to make the actual forms and lines asymmetrical while maintaining the overall symmetry and balance.

As I worked on this more, I realized that I was interested in keeping everything loose and gestural, perhaps because I had just finished two 30" x40" woodland landscapes that were quite detailed and accurate in their forms, especially the tree limbs and branches, and I was tired of that detailed accuracy right now.

So, all in all, you get a glimpse of the reality of my artistic practice even though this may not be the greatest painting I've ever done. I am pleased with what I learned and I hope there is something here for you to learn from also.





Workshops and Demos Continued

Zoom Demo with Karen Israel April 16th, 2022



Piedmont Pastel Society

Please join us for ...

Our April Zoom Member Demo

April 16th from 10:00am - 12:00pm EST

Karen Israel

Karen Israel's pastel paintings are defined by their dynamic compositions and unique viewpoints. She is influenced by the light and mood of the subject and lets those elements dictate her approach. These subjects are rendered with a strong appreciation for the rigors of formal design coupled with a fearless array of color choices. Karen enjoys teaching pastel almost as much as she enjoys painting and has had the honor of jurying local and national exhibits. She conducts many teaching demonstrations and workshops for art organizations throughout the United States.

Karen's work has earned the title of Master Pastelist with the Pastel Society of America and is a Master Circle Recipient with the International Association of Pastel Societies. Karen is a Signature Member with the American Artist Professional League and an Elected Member with the Hudson Valley Art Association and Audubon Artists Association. Karen is an elected member of the Lyme Art Association, the Salmagundi Club, NYC and the Copley Society, Boston.



The Zoom link will go out the week of the demo.

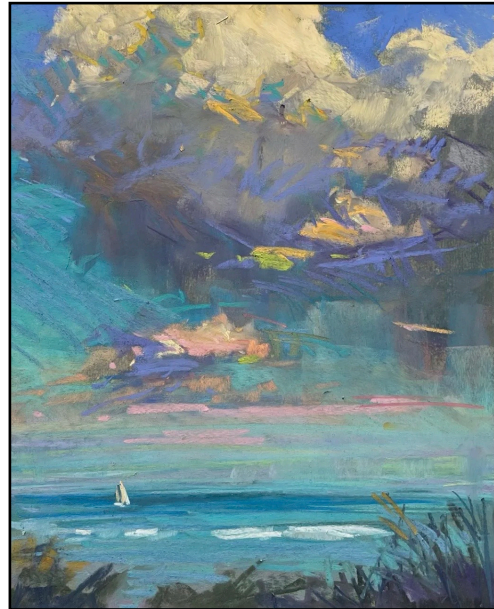


Workshops and Demos Continued

Zoom Demo with Greg Barnes

May 21, 2023 10am to 12pm

More information Coming Soon!





Member News

A "Walk in the Park" Paint-Along with Rita Kirkman

"A Walk in the Park" Paint-Along!



Saturday
April 16, 1pm CT



To celebrate Spring,
come take a virtual
walk in the park!

(We'll paint a couple of
park trails, and maybe we'll
add some flowers!)

(Registration link in description)

See next page...



Member News

Rita Kirkman Paint Along Continued

Date & Price - "A WALK IN THE PARK"

4/16/2022 - 1PM CST (2PM EST)

\$25.00

Location - **Zoom**

More Details

Take a virtual walk in the park and paint some springtime park trails with us! (we might even add some flowers!)

Rita will send you the Zoom invitation, some reference photos (or you can use your own) and materials suggestions.

She will be using pastel with an acrylic-based underpainting, but you can use the medium of your choice. Some attendees have enjoyed using oil, acrylic, pastel pencil, and even watercolor with the paint-alongs. Plenty of instruction will focus on values and temperature which are universal to all color mediums. The paint-along will start at 1pm Central Time and will last about 2 hours.

(All registrants will receive a link to the video a few days later, so if you have to miss part, no worries!)

Registration and Payment instructions

1. Choose one of the payment methods below, and enter \$25.
2. After payment, email Rita at rita@ritakirkman.com so she can send you the Zoom link. Mention "A Walk in the Park" to identify which paint-along you're paying for.
3. **Add rita@ritakirkman.com to your safe contacts!** If you don't, some communications might not reach you.

Important: Please register **Early** to allow time to send your invite, but no later than 10am CT on April 16!

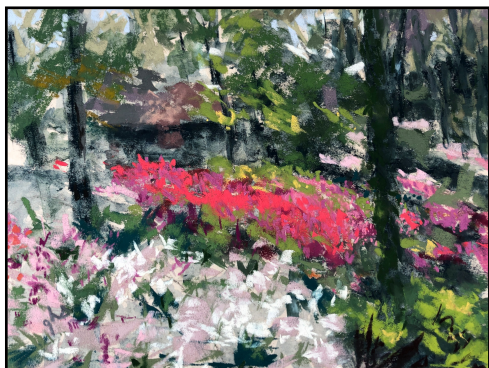
[Pay with PayPal](#)

OR

[Pay with Credit Card](#)



Member News



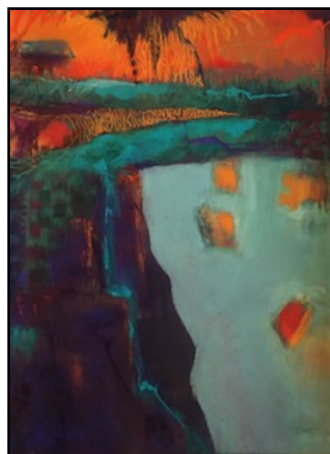
Azalea Explosion

Member, Ginny Stocker was accepted into the "Pastels in Paradise" show with the Left Coast Pastel Painters. Azalea Explosion was painted plein air during the gorgeous blooming season of 2021 in Winston Salem, NC.

Kathy Summer received 1st Place at the Southwest Florida Pastel Society's member show for her painting titled "Follow the Yellow Brick."

Two of Kathy's paintings were accepted into the 36th Annual All Florida Show.

She received an Honorable Mention for her Mixed Media painting titled "Wuhan Virus".



Follow the Yellow Brick



Wuhan Virus



Member News Continued



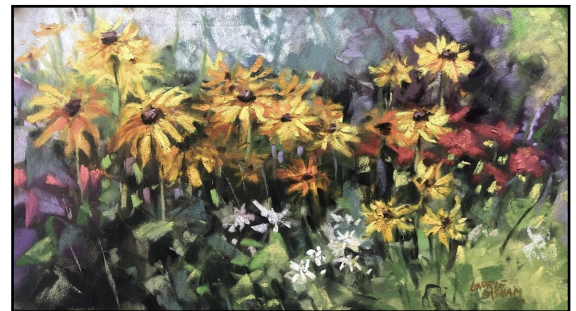
Laurie Basham has artwork in several shows in the Triad area. She was selected to represent pastels in the Spring Show at Davidson-Davie Community College entitled Looking Forward, and her 6 pieces will be on display until mid-May.

Laurie's artwork can be viewed at the Red Dog Gallery Show, "Nature Calls," and she has several pieces at the Artist Market on Main in Mocksville.

Laurie's piece "Ashley's Garden" was selected for the Left Coast Pastel Painters Society's show Pastels in Paradise.

Her painting, Jenna in Red Brocade, is featured in the Gallerium online exhibit, Femina 2022.

A terrific achievement for Laurie she was recently juried as a Signature Member of the Degas Pastel Society!!!



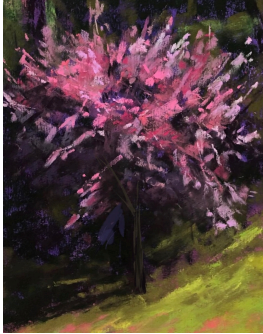
Ashley's Garden



Jenna in Red Brocade



Member News Continued



Redbuds

Joan Dreicer has been selected to paint in "Plein Air Unleashed". This week-long painting and art event includes area artists interested in painting Plein Air. Select artists will have their week's works in a month long exhibit at Allure Gallery in White Stone, VA,



"Mourning" Light



Cousins



Young Diana

From Membership Chair/Carmen Davidson Welcome to our new members!!!

1. Karey Bancroft
2. Ali Baucom
3. Kim Eshelman
4. Arlene Gutterman
5. Katie Hallahan
6. Stacie Jones
7. Ginger Lambrecht
8. Lise Obelenus
9. Joyce Patch
10. Leigh Royer
11. Tina Sagartz
12. Don Smith

Rita Kirkman has won the Mr. and Mrs. Richard C. Traylor Award for her painting "Cousins" (pastel, 32x32 inches) at the SAALM 92cd Annual Artists Exhibition.

The show continues through June 3rd, 2022, at the San Antonio Art League Museum, 130 King William Street, San Antonio, TX.

Rita's painting "Young Diana" (pastel, 12x9 in) is included in the Pastel Society of Southeast Texas 2022 Members Show, at the Arts for Rural Texas at 114 N Live Oak St in Fayetteville. The exhibit runs from March 12 through May 21,

Glad to Meet You!



Member Opportunities

We need you!!! HELP WANTED!!!

Members of the Piedmont Pastel Society,

As you ready your submissions for this year's Statewide Show, please keep in mind that we, PPS, will be the host society for next year's show. A show of this caliber can not take place without the many volunteers who are willing to give their time and expertise.

Please consider volunteering to help. At this time, we especially need members who are willing to lead a Committee. Although, I have some people in place, there are still a lot of empty spots. If you have the desire or skills needed for the following positions, please let me know as soon as possible. It might seem like it's early in the game but we need to get our team assembled.

**Hospitality/Opening Reception Committee
Publicity Committee
Website Committee
Catalogue Committee
Budget Committee**

Thanks

Judy Wilson

JAWArt.wilson@gmail.com



Member Opportunities

PPS Facebook Monthly Challenge

Don't forget about our Facebook Raffle! Our PPS Facebook page is a great way to stay connected and see each other's work, as well as share news. Thank you to all of you who continue to post and comment on our page. Without meeting in person, this is our best way to stay in touch.

Each month a different theme is identified. Join us and post your theme related work for a chance to win our monthly raffle for a \$25 gift certificate. We love hearing from you and admiring your talent!

Themes for the remainder of 2022:

April - Floral

May - Still Life

June - Water or Seascapes

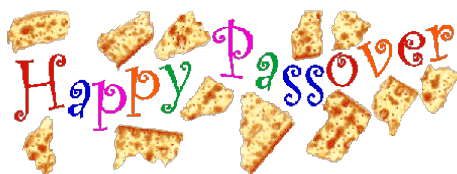
July - Sunsets

August - Figure/Portrait

September - Animals

October - Fall Foliage

November - Structure in the Landscape



Previous month's 2022 winners

January was Ginny Stocker

Feb. was Malia Bryngelson

March was Mary Crow



Member Opportunities

Here is an opportunity for our artists to show their work at the Matthews Novant Hospital, newly remodeled Main Entry. Call Crystal at her number listed below if we want to show there:

I want to reach out about interest in displaying your art on our Local Artist Exhibit wall. It has been so well received and is an opportunity to give our patients and visitors an opportunity to discover local art. We also know that this helps relax them as they all come in with stress and anxiety.

It has taken a little longer to get the equipment to incorporate more walls in our display, but hopefully that will happen soon.

Our next opportunities are:

- **April 20th**
- **June 8th**
- **July 20th**
- **August 31st**
- **October 5th**

We have a larger wall and a smaller wall, so I will need to know which one you would like to display on. We also need for you to frame a bio to have on hand as well. I will also include how we want the tags on the art.

Please let me know if you want to display one of these 6-week time frames.

Thanks for sharing your art!

Crystal Moore, Manager

Guest Services

Novant Health Matthews Medical Center

1500 Matthews Township Parkway

Matthews, NC 28105

704-384-6387





Members Share

From member Jay DeChesere

I am currently working on experimenting with underlayerment with watercolor as that is my other primary medium.

This seems to work very well on Lux Archival sanded paper. It behaves much differently than on Uart 400, in a good way.

This is a recent pastel which is more impressionistic for me, a style that I am excited about. The name of this is Marina's Last Light! 12x18



Marina's Last Light

Mary Shreves Crow Blog - Consider Your Focal Point At the Start

As an artist who works in oils and pastels, I can appreciate masterful painting. I was compelled to write about composition for artists who have mastered their mediums, but could improve their paintings with a few tips and tricks. Although many books are written on this subject, here is a short summary of possibilities for consideration.

Focal Point

Before beginning a painting of any subject, consider the focal point. By definition, it is the "focus point" for the viewer of the finished piece. The artist should share what is igniting his or her passion to paint that image. The answer to that question is most likely the focal point. Implementing a few of these tried and true techniques, which I will describe, could create a similar level of interest for the observer.



Members Share

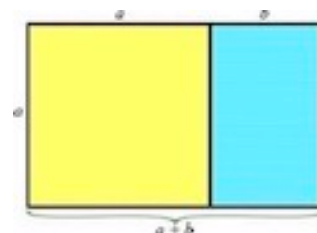
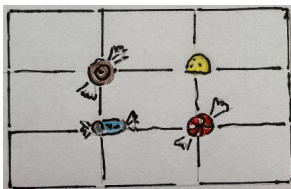
Mary Shreves Crow Blog, Cont'd

Typically warm colors come forward and cool colors recede. Those temperature considerations can create atmosphere and perspective. In landscape paintings as in nature, cool colors generally recede as atmosphere occurs from the viewer to the distance. In landscape, the most chromatic color is generally in the foreground with colors in the distance becoming more grayed. In the case of a sunset, however, the warmest colors can live in the distance, while the foreground has shadow or is backlit. The brightest color is a magnet in the painting.

Limited value contrast can be interesting such as depicting a foggy day. Something is then needed to add drama and lead to the focal point, since values are muted by the fog. Creating differences in sizes, shapes, textures, and color temperatures are useful tools for the painter in this situation.

Sweet Spots

A focal point can be anywhere in the picture plane but can be emphasized if placed in a "sweet spot." Anyone who plays sports knows that a sweet spot can hit the ball out of the park. Tried and true sweet spots just make sense.



The Golden Mean

This scientific principle in the most pleasing division of space is last but not least. God's design is represented throughout creation. This principle is a mathematical formula prescribing a pleasing relationship of shapes and sizes. The conch shell is frequently used as an example. Paintings such as Vermeer's "Girl with Pearl Earring" and DaVinci's "Mona Lisa" also prove this principle. Applying this arrangement to your composition from the get-go can bring positive results.



Members Share

Mary Shreves Crow Blog Continued

Speed of Viewing

The artist can control the path and speed of the viewer to the focal point. This point could be a sunset, rock formation, interesting tree, or some distinctive facial feature in portrait painting. To start, consider taking the viewer's eye into the picture plane with an obvious entry point like a board game heading to the winning square. Examples of an entry into a landscape might be a large hedge, gravel driveway or a stream.

Next, a slow passage can be established with a few of the following visual techniques. A lingering transgression by the viewer is preferable to a quick glance. A winding road, with disappearing edges, will make for a slower traverse through the picture plane. A straight path is a fast ride on the visual sliding board and possibly a sliding right out of the painting. Surprises around the bend create pauses on the journey, encouraging the viewer to stop and smell the flowers. Also, patterns of like objects can provide stepping stones to follow. Varying the colors, shapes, values, and distances between them, prevents speed reading and creates interest.



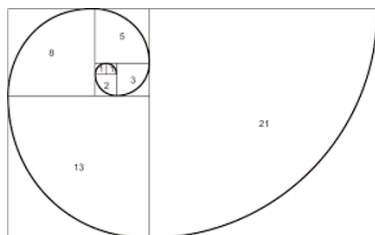
Warm and Cool Colors

The use of color temperature by the artist can be a guide to the center of interest for the viewer. If a vivid spot of color will attract the viewer's eye, repeating that color in other parts of the composition will produce movement around the picture plane. Repeating that color in odd numbers of objects, or in various sizes avoids "sameness," and is visually pleasing. In nature, colors are rarely isolated. To quote landscape painter Kathie Odom's phrase "Share the love!"



Members Share

Mary Shreves Crow Blog, Cont'd



The Golden Mean



Sabin's Dog - Oil

Mary Shreves Crow



Bridge - Pastel

Mary Shreves Crow

In summary, you the artist are the controller of all visual aspects of your painting. Delivering the passion of your work to the viewer is the goal. Sharing the story of what inspired you can be enhanced by using any of the aforementioned "tools" of composition, and the many others available. Planning initially pays off in the end with a more interesting painting and even a possible sale.

It's not what you look at that matters...
it's what you see.

Henry David Thoreau

Thanks to all who contributed to this newsletter.

Excuse my learning curve.

Be looking for the next call for news!

Joan Dreicer-Newsletter Chair

